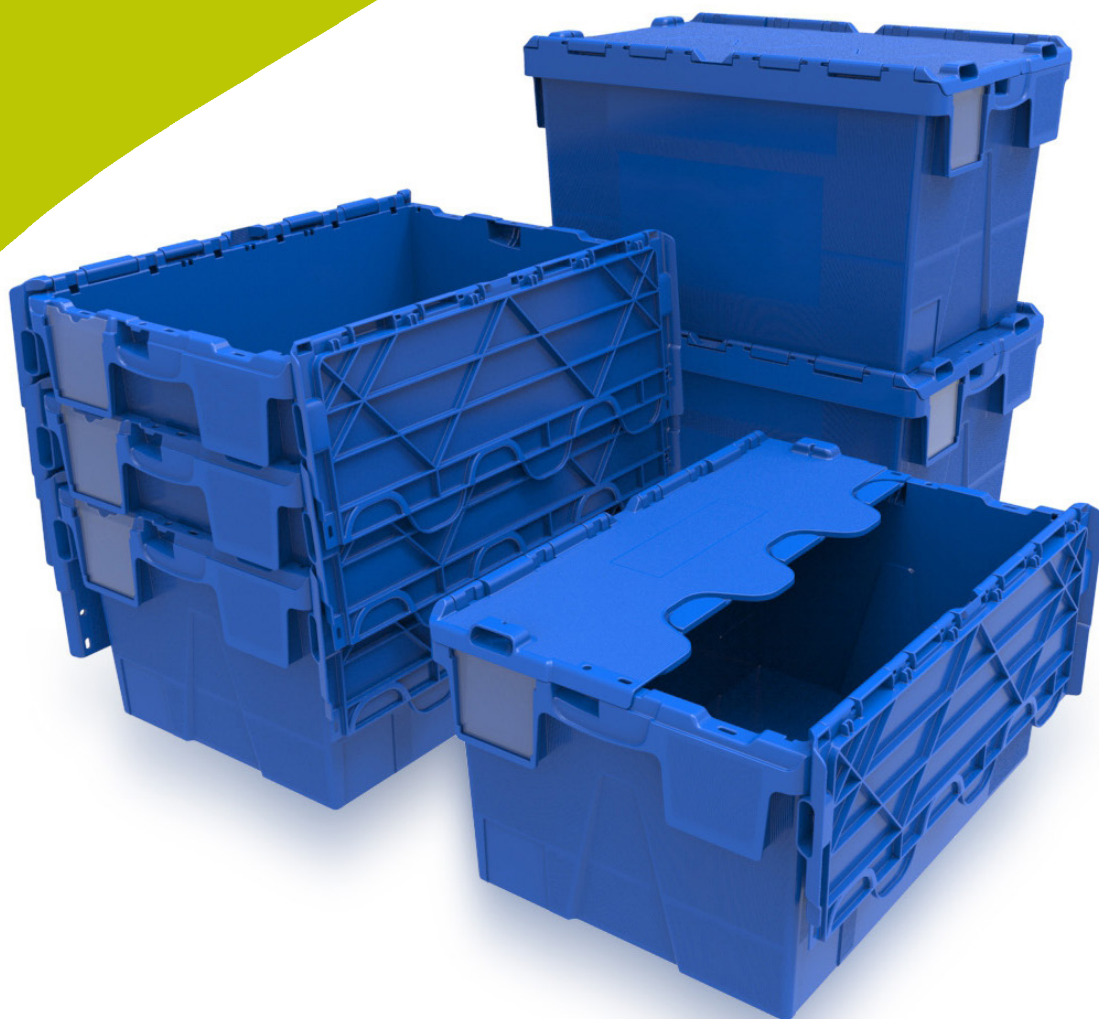


# 360°

Schoeller Allibert Returnable  
Plastic Packaging Solutions

## Kaiman® ALCs

The secure distribution solution



Schoeller Allibert

Innovating your logistics for a better world

# The 54 and 65 litre Kaiman® Attached Lid Containers

Our Kaiman® ALCs improve security, smoother conveyor flow plus a host of innovative identification and handling features.

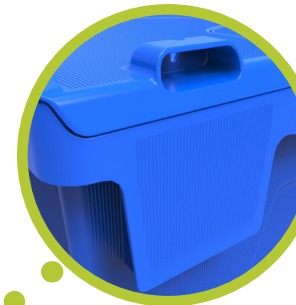
## 01 Performance

- 10% lighter than existing models to reduce fuel costs and improve carbon footprint.
- Stacks 7 high carrying 25Kg unit load.
- Nests to 70% when empty.



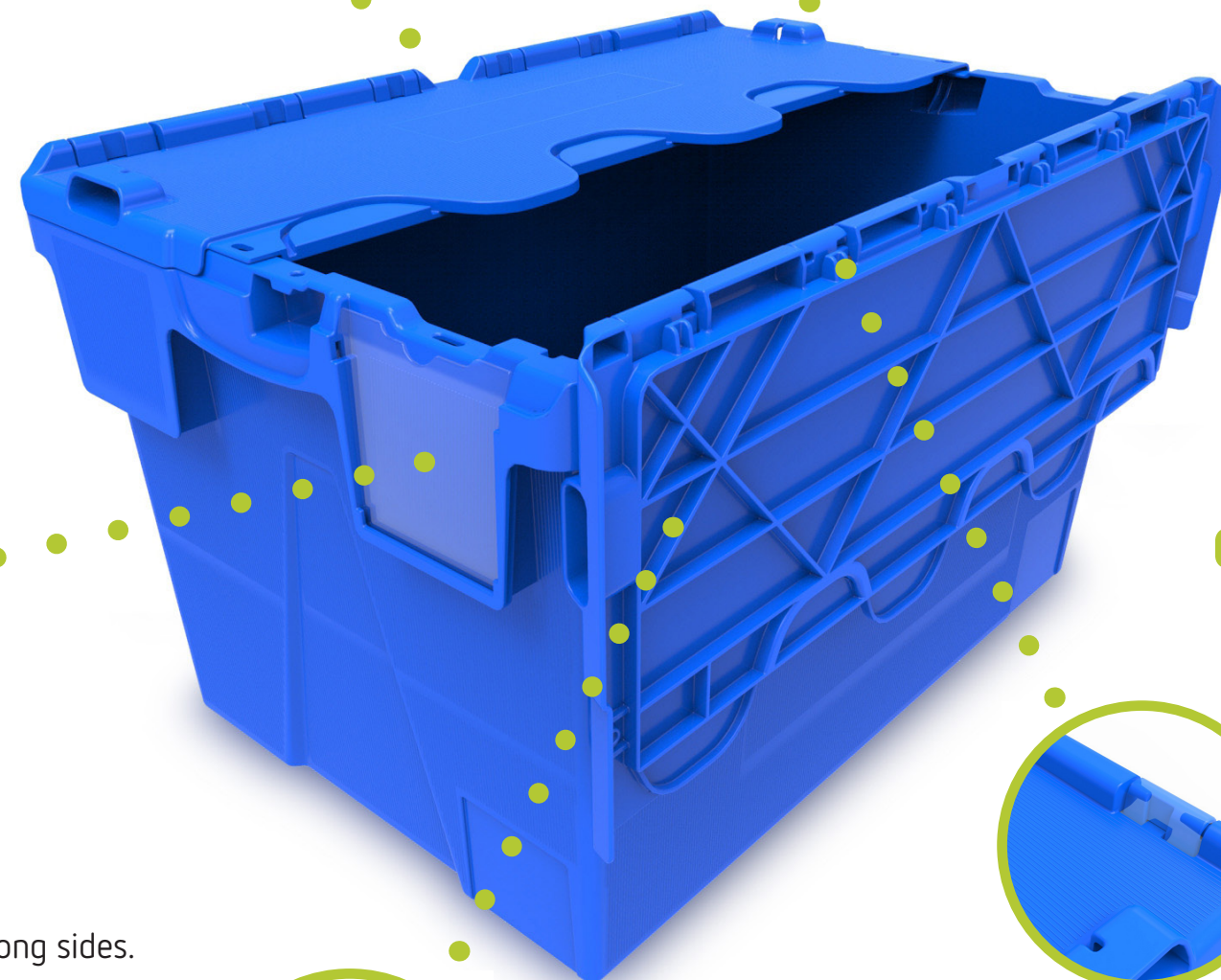
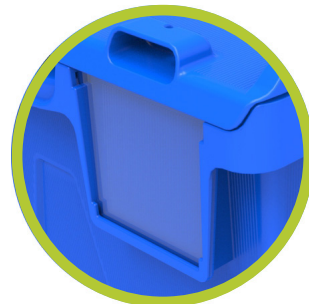
## 02 Automated handling

- Lid location for automated opening.
- Lids hang vertically when open.
- Bevelled leading edge to base for smooth transition on conveyors.
- Reinforced base option for heavier loads and improved performance on conveyors.



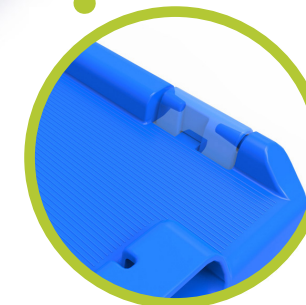
## 05 Identification

- Ribbed finish over sides and lid for removal of adhesive labels without leaving a sticky residue.
- Ticket window retains & protects identity cards & labels.
- 80 x 70mm label recess on all 4 sides.
- Can be RFID enabled.



## 03 Security

- Innovative “teeth” on the lid interlock with the container base to prevent lids from being prised open when closed and fitted with tamper-evident security seals.



## 04 Branding

- Large 295x150mm print area on both long sides.
- 170x30mm Printing area inside lid provides visible identification when containers are nested.



The secure distribution solution

# Kaiman® attached lid containers : The range



9937.004 18 litres 

External dim.: 400 x 300 x 222mm  
Internal dim.: 338 x 254 x 197mm  
Stacked height: 210mm  
Nesting ratio: 51%  
Weight: 1.8 Kg



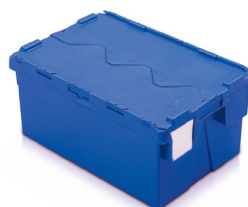
9107.004 22 litres 

External dim.: 400 x 300 x 264mm  
Internal dim.: 334 x 254 x 239mm  
Stacked height: 252mm  
Nesting ratio: 59%  
Weight: 1.9 Kg



9108.004 25 litres 

External dim.: 400 x 300 x 306mm  
Internal dim.: 329 x 250 x 282mm  
Stacked height: 295mm  
Nesting ratio: 65%  
Weight: 2.1 Kg



9109.004 48 litres 

External dim.: 600 x 400 x 264mm  
Internal dim.: 530 x 353 x 240mm  
Stacked height: 253mm  
Nesting ratio: 59%  
Weight: 3.0 Kg

## New Kaiman®




8583.004 54 litres 

External dim.: 600 x 400 x 306mm  
Internal dim.: 515 x 346 x 282mm  
Stacked height: 295mm  
Nesting ratio: 65%  
Weight: 3.0 Kg

## New Kaiman®




8584.004 65 litres 

External dim.: 600 x 400 x 367mm  
Internal dim.: 508 x 346 x 341mm  
Stacked height: 354mm  
Nesting ratio: 71%  
Weight: 3.2 Kg

## New Kaiman®




8583.027 54 litres 

As 8583.004 with reinforced conveyor base (ribs on inside of base)

## New Kaiman®




8584.027 54 litres 

As 8584.004 with reinforced conveyor base (ribs on inside of base)

9114.004 70 litres 

External dim.: 600 x 400 x 400mm  
Internal dim.: 521 x 343 x 375mm  
Stacked height: 388mm  
Nesting ratio: 73%  
Weight: 3.7 Kg

9106.004 80 litres 

External dim.: 710 x 460 x 368mm  
Internal dim.: 597 x 374 x 330mm  
Nesting ratio: 78%  
Weight: 4.0 Kg



A199.580.020 Security seal  
Tamper-evident security seal for Kaiman® & Large ALCs



9192.004 Universal dolly  
800 x 600mm dolly with 2 fixed, 2 swivel castors, 10 load retaining pop-ups and flip-out extension for carrying nested 600x400mm ALCs.  
External dim.: 800 x 400 x 171mm  
Max. load: 500 Kg



Schoeller Allibert

Innovating your logistics for a better world



Please visit our website  
[www.schoellerallibert.com](http://www.schoellerallibert.com)