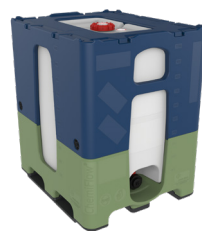


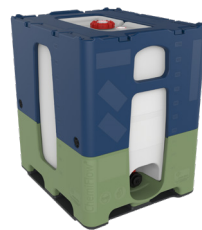
# ChemiFlow®: Technical data

## Runner options



82920XX: 3 Runner version - 1000L  
Ext. (mm) 1200 x 1000 x 1323  
Weight (Kg) 134  
Stacking height (mm) 1308  
Maximum density 1.9 g/cm³  
Material PE

Easy to handle with (electronic) pallet jacks as well as with forklifts

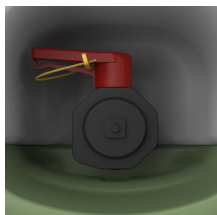


82921XX: 6 Runner version - 1000L  
Ext. (mm) 1200 x 1000 x 1323  
Weight (Kg) 137  
Stacking height (mm) 1308  
Maximum density 1.9 g/cm³  
Material PE

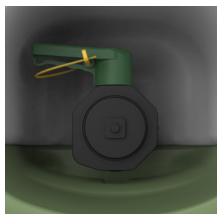
More secure on the forks of a forklift

## Valve options

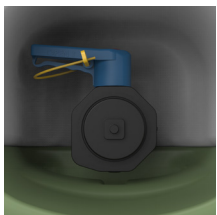
Please enquire about other types of valve we offer.



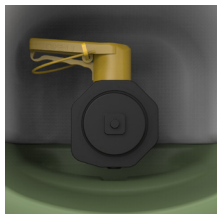
Valve DN50 EPDM  
GRPP Body  
PPH Ball  
Ref. 8292.XAX



Valve DN50 Viton  
GRPP Body  
PPH Ball  
Ref. 8292.XBX



Valve DN50 Viton  
PE Body  
PVDF Ball  
Ref. 8292.XCX



Valve DN50 EPDM Food Approved  
GRPP Body  
Ref. 8292.XDX



Schoeller Allibert  
Innovating your logistics for a better world

## Vents and closure options



Viton - High Flow vent  
167L/Min



Viton - no vent  
Opening closed



EPDM - High Flow  
167L/Min



EPDM - no vent  
Opening closed

## Indication of DN50 vents and DN150 closures

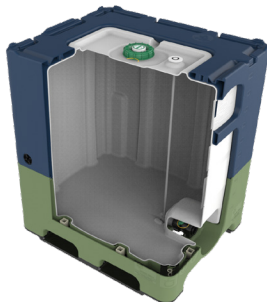
Ref. 8292.XXA: High Flow vent in the lid + High Flow vent in the tank  
Ref. 8292.XXB: High Flow vent in the lid + solid plug in the tank  
Ref. 8292.XXC: Solid plug in the lid + solid plug in the tank  
Ref. 8292.XXD: High Flow vent in the lid + CDS extractor

## Technical Features

- Stacked full: 1/1
- Stacked empty: 4/1
- Max. stack load: 2200 kg
- Gross capacity: 1034L
- UN, ADR, RID, IMDG certified
- UN number (rotolene material): UN 31HH1/Y/[MM/YY]/E/SA/02-G-289-01/2059/2200
- Standard liquids: Wetting solution / Acetic Acid / Butyl Acetate / White Spirit / Nitric Acid 65% / Water.

## Chemical Dispensing System (CDS)

The CDS system ensures that content cannot be spilled. This closed system prevents both liquid and fumes from escaping.



Please visit our website  
[www.schoellerallibert.com](http://www.schoellerallibert.com)

# 360°

## Schoeller Allibert Returnable Plastic Packaging Solutions



Schoeller Allibert  
Innovating your logistics for a better world

In line with its policy of continuous development, Schoeller Allibert reserves the right to amend product specifications described in this catalogue without prior notice. Most of our products are protected by patent, registered design or copyright. Texts, characteristics, pictures and plans are not contractual. Creation 04/2020.

# ChemiFlow®: Reusable IBC's made easy



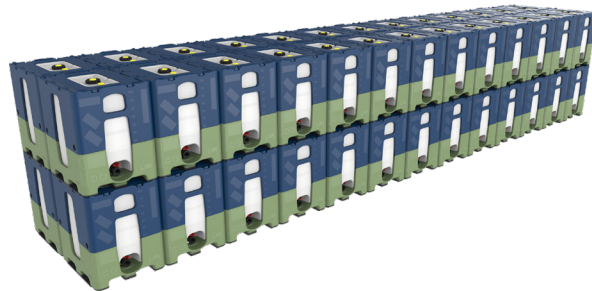
## Anti-corrosive protection

ChemiFlow® is made from 100% plastic parts limiting corrosion.

## Optimized storage and transportation

Optimized FTL and sea container filling. Stacking 1 on 1 allowed when filled even during transport.

- FTL: 52 units
- 40 FT HC sea container: 38 units.
- 45 FT HC PW: 50 units.



## Customization

The ChemiFlow® is available in a variety of colours to be used for branding and content identification. It also features multiple areas for labels on the short sides.

## Filling made easy

The ChemiFlow's® centered opening position makes it easy to align it with automated filling and washing stations. Sloped surfaces and smooth edges enable liquids to flow as easily as possible towards the outlet.



## UN, ADR, RID, IMDG Certified

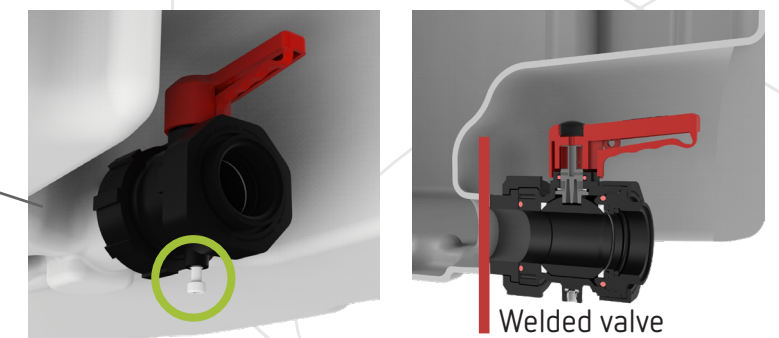
31HH1/Y certified for the transport and storage of hazardous materials with density of up to 1,9 g/cm<sup>3</sup>. The UN information is engraved on the tank.

## Safe, fast and complete emptying

A ChemiFlow® with 2 high flow vents can be emptied in less than 3 minutes. The heavily sloped design of the bottom of the tank ensures that the residual amount of liquid is minimized. The optional CDS system prevents both liquids and fumes from escaping.

## Smart IBC - Tracking

Features locations for RFID tags and IoT beacons to ensure efficient tracking on demand.



Welded valve

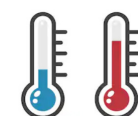
Improved leak proof security thanks to the welded valve that ensures an extra strong connection. The valve bolt prevents unintended rotation or uncoupling of the valve.

## Sustainable, repairable and long-lasting

Easily switch from a 3 runner to a 6 runner version without replacing the whole unit. All parts can be replaced quickly and easily thanks to the Bayonet® system, ensuring that the ChemiFlow® stays tough and secure. Maintenance and repair costs are kept low and at the end of its service life it is 100% recyclable.

## Versatile wide range

1200x1000 footprint available in 3 skid or 6 skid versions. UN certified and fully adapted to the various needs of the chemical distribution and manufacturing industries.



Usable in temperature environment of -18°C up to +40°C