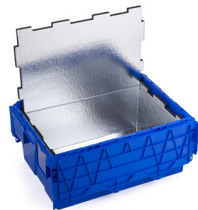


CoolFlow : Technical data

CoolFlow range



**9109.580 - 30L\***

Ext. (mm)\* 600 x 400 x 264  
Int. (mm)\* 480 x 315 x 200  
Stacked height (mm) 253  
Weight (kg)\* 3.43



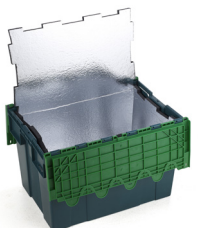
**8583.580 - 38L\***

Ext. (mm)\* 600 x 400 x 306  
Int. (mm)\* 490 x 310 x 250  
Stacked height (mm) 295  
Weight (kg)\* 3.42



**1311.580 - 38L\***

Ext. (mm)\* 600 x 400 x 300  
Int. (mm)\* 490 x 310 x 250  
Stacked height (mm) 303  
Weight (kg)\* 3.83



**9104.580 - 50L\***

Ext. (mm)\* 600 x 400 x 385  
Int. (mm)\* 500 x 310 x 320  
Stacked height (mm) 368  
Weight (kg)\* 4.41

Eutectic plates



**A199580016 - 1.5L**

Ext. (mm) 327 x 167 x 39  
Eutectic point -3°C  
Weight (kg) 1.75

Eutectic plate for refrigerated products



**9828.005 - 1.5L**

Ext. (mm) 327 x 167 x 39  
Eutectic point -15°C  
Weight (kg) 1.7

Eutectic plate for frozen products



**9729.301 - 1.5L**

Ext. (mm) 327 x 167 x 39  
Eutectic point -21°C  
Weight (kg) 1.9

Eutectic plate for frozen products

Just keep it chill

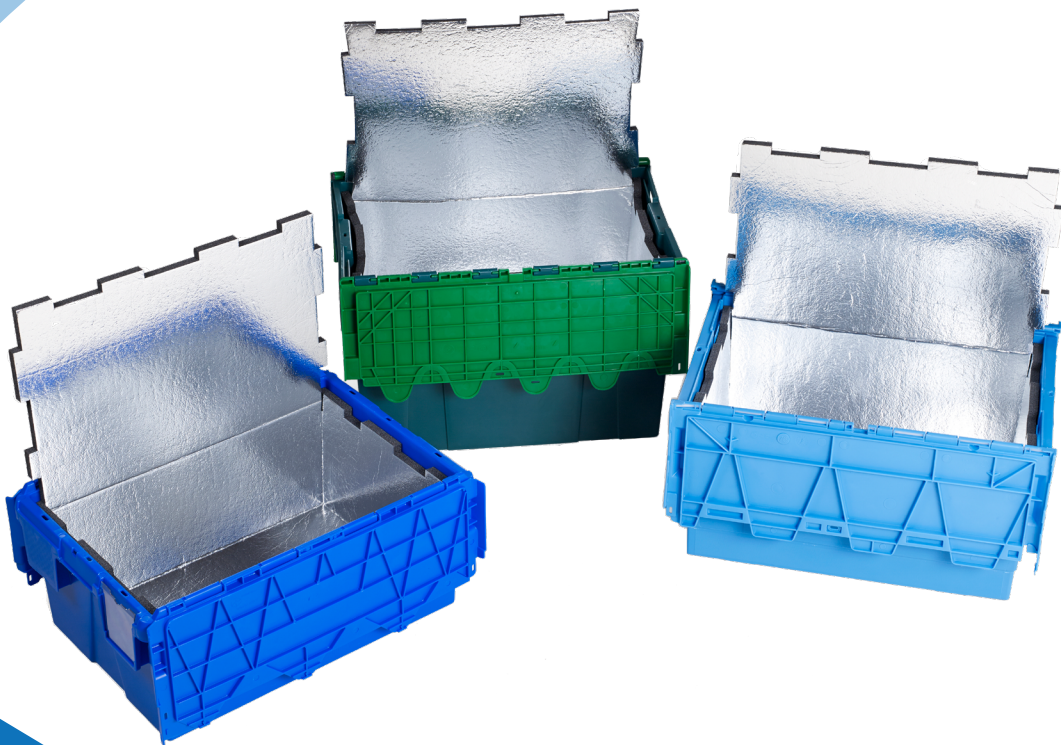
From warehouse up to the doorstep of the consumer.



Efficient by design

circular by nature

Schoeller Allibert



Schoeller Allibert



Schoeller Allibert

(\*) With standard 15mm internal insulating casing

In line with its policy of continuous development, Schoeller Allibert reserves the right to amend product specifications described in this catalogue without prior notice. Most of our products are protected by patent, registered design or copyright. Texts, characteristics, pictures and plans are not contractual. Creation 10/2020.



# CoolFlow: The Perfect Solution for Transporting Temperature-Sensitive Products

## Internal insulating lining

The internal insulating lining is made from a very light material that does not absorb moisture. It provides excellent thermal insulation and is light and easy to handle and clean.



## Easy to clean

Smooth walls and insulating material does not absorb moisture.

## Stable cooling

Food safe cold accumulators: optimal and stable cooling capacity during its long life. Assured maintenance of the cold chain.

## Environmentally friendly

Refrigerated vehicles are not required, therefore reducing CO2 emissions and noise.

## Customizable

Label holders and printing options.

## Easy and safe to handle

Stable stacking, fully ergonomic and safe. The attached lids enable easy opening and closing.

## 100% food safe

All components are made out of high quality food approved materials.

## Secured loads

Our CoolFlow containers are sealable to secure goods against unauthorized removal.



## Eutectic plates

Eutectic plates provide with optimal cooling power and are designed to withstand freezing/thawing cycles while maintaining performance throughout years of use.



# CoolFlow

CoolFlow enables any vehicle to transport perishable food at a controlled temperature with demonstrated efficiency.

