

# 360°

Schoeller Allibert  
Returnable Plastic  
Packaging Solutions



Schoeller Allibert  
Innovating your logistics for a better world

# AgriLog® The new Schoeller Allibert fruit and vegetables Big Box

Versatile and Strong

## Extra care for fresh produce

Only 581 high AgriLog® is designed to preserve fruit and vegetables quality

The internal pyramidal base structure reduces shocks while harvesting and facilitates an even and balanced distribution of produce in the box

## Lightweight

Versions are only from 26,5 to 32,5 Kg

Reducing transport cost and gas emission

## Outstanding performances

500 kg unit load thanks to reinforced base

4500 kg stacking load thanks to new pillars

## Fast drying

Special design features like slanted horizontal surfaces speed water drainage and reduce cleaning process time, providing extra savings

## Large internal volume

446 L for a maximized cool chamber space use and optimized vehicle fill

8 sidewall pockets for more internal volume

## Highly ventilated and safe

Optimized air flow, thanks to new ventilation design

Easy to clean

Base prepared for friction plugs to enhance performance on fork tines, increasing safety

## Optional reinforced pillars version

increases impact resistance and stacking strength

## Customization & tracking

Secure your fleet, increase management efficiency, and enhance visibility of your brand

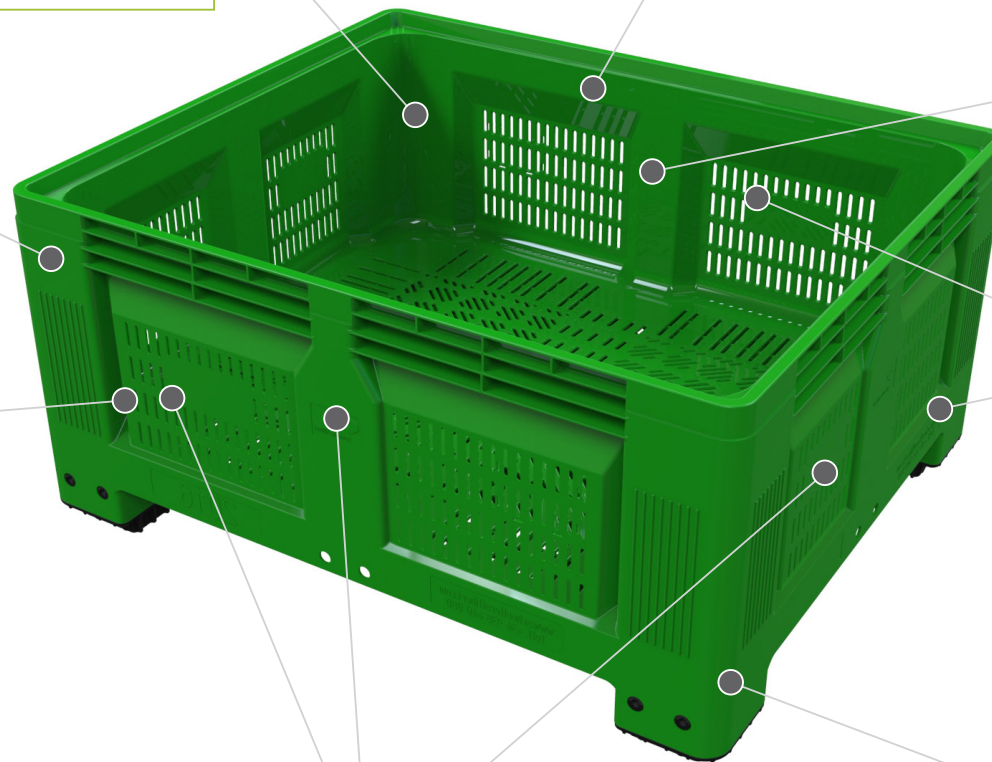
Ribbed areas for self adhesive labels, on each sidewall

Inserts for your logo print / engraving on each sidewall

Optional areas for label holders

## Versatile wide range

4 feet, 2 skids and 3 skids variants to meet all types of fruit and vegetables supply chain needs from harvesting field to retail stores.



# AgriLog® : The range



4601.400 - 446 L - AgriLog®

Ext. (mm) 1200 x 1000 x 581  
Int. (mm) 1120 x 920 x 420  
Weight (Kg) 26.5  
Stacked height 555

Ventilated base and walls, 4 feet.



Technical specifications :



Internal pyramidal base structure  
for produce preservation



4601.450 - 446 L - AgriLog®

Ext. (mm) 1200 x 1000 x 581  
Int. (mm) 1120 x 920 x 420  
Weight (Kg) 28.0  
Stacked height 555

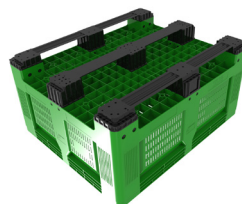
Ventilated base and walls, 4 feet.



4601.500 - 446 L - AgriLog®

Ext. (mm) 1200 x 1000 x 591  
Int. (mm) 1120 x 920 x 420  
Weight (Kg) 29.5  
Stacked height 565

Ventilated base and walls, 2 skids.



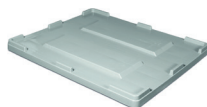
Reinforced base



4601.600 - 446 L - AgriLog®

Ext. (mm) 1200 x 1000 x 591  
Int. (mm) 1120 x 920 x 420  
Weight (Kg) 32.5  
Stacked height 565

Ventilated base and walls, 3 skids.



4410.820 - Lid

Ext. (mm) 1212 x 1012 x 79  
Weight (Kg) 7.6



Schoeller Allibert

Innovating your logistics for a better world



Please visit our website  
[www.schoellerallibert.com](http://www.schoellerallibert.com)

In line with its policy of continuous development, Schoeller Allibert reserve the right to amend product specifications described in this catalogue without prior notice. Most of products are protected by patent, registered design or copyright. Texts, characteristics, pictures and plans are not contractual. Design and production by MAGIMA - January 2016.