

# 360°

Schoeller Allibert  
Returnable Plastic  
Packaging Solutions

MaxiLog®



**Schoeller Allibert**

Innovating your logistics for a better world

# MaxiLog® The new Schoeller Allibert big box

Smooth, Lightweight and Strong

## Smooth and safe

Easy to clean  
Easy to empty  
Suitable for deep freezing

## Lightweight

Only 36,6 kg for solid 3 skids version (4429.300)  
Allowing more fresh and frozen products inside each truck  
Reducing transport cost and gas emission

## Strong

Optimized corner pillars design  
for a balanced load transfer  
Allow 4500 kg stacking load

## Large internal volume

610 L for a maximized truck payload  
and optimized vehicle fill

## Fast drying

Special design features like slanted  
horizontal surfaces speed water  
drainage and reduce cleaning process  
time, providing extra savings

## Easy and fast handling

Internal top corner design facilitate centering  
at stacking and increase stacking safety

## Outstanding performances

Reinforced base for 450 kg  
unit load with minimum deflection

Base prepared for friction plugs  
for extra handling safety

## Customization & tracking

Secure your fleet, increase management efficiency,  
and enhance visibility of your brand

Pin dot areas and recessed zones self-adhesive labels, on each sidewall

RFID ready: special zones on each sidewall

Inserts for your logo print / engraving on each sidewall

## Outlet valve prepared

On demand the MaxiLog® can be equipped  
with 1" drain valve or 2" drain valve,  
prepared zones are located on the base  
and on each sidewall

## Versatile wide range

4 feet, 2 skids and 3 skids variants  
are available in solid or ventilated versions,  
to meet all types of industries requirements  
from food processing to pharmaceutical  
industry and agriculture.

# MaxiLog® : The range

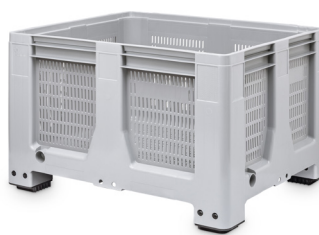


4429.100 - 610 L



**Solid side and base 4 feet**

Ext. (mm) 1200 x 1000 x 760  
Int. (mm) 1108 x 908 x 600  
Weight (Kg) 32.2  
Stacked height 734



4429.400 - 610 L



**Ventilated walls and base 4 feet**

Ext. (mm) 1200 x 1000 x 760  
Int. (mm) 1108 x 908 x 600  
Weight (Kg) 31.4  
Stacked height 734

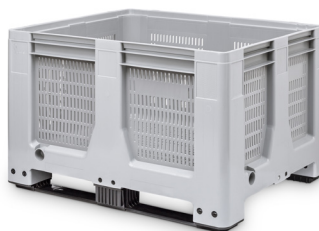


4429.200 - 610 L



**Solid walls and base 2 skids**

Ext. (mm) 1200 x 1000 x 760  
Int. (mm) 1108 x 908 x 600  
Weight (Kg) 34.3  
Stacked height 734



4429.500 - 610 L



**Ventilated walls and base 2 skids**

Ext. (mm) 1200 x 1000 x 760  
Int. (mm) 1108 x 908 x 600  
Weight (Kg) 33.4  
Stacked height 734

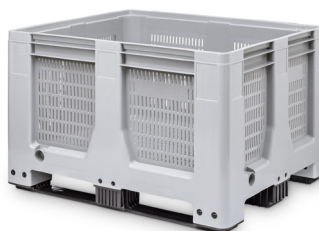


4429.300 - 610 L



**Solid walls and base 3 skids**

Ext. (mm) 1200 x 1000 x 760  
Int. (mm) 1108 x 908 x 600  
Weight (Kg) 36.6  
Stacked height 734



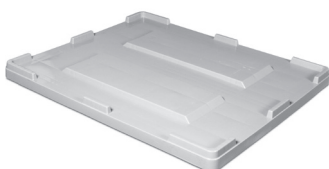
4429.600 - 610 L



**Ventilated walls and base 3 skids**

Ext. (mm) 1200 x 1000 x 760  
Int. (mm) 1108 x 908 x 600  
Weight (Kg) 35.7  
Stacked height 734

## Lid



4410.820

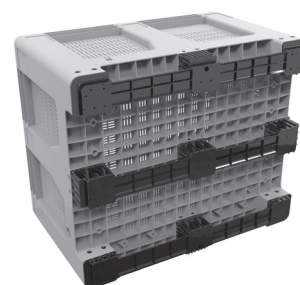


Ext. (mm) 1212 x 1012 x 79  
Weight (Kg) 7.6

## Technical specifications



Solid smooth internal base



Reinforced base



Please visit our website  
[www.schoellerallibert.com](http://www.schoellerallibert.com)



**Schoeller Allibert**

Innovating your logistics for a better world